

Charlotte's Web

Oklahoma Children's Theatre



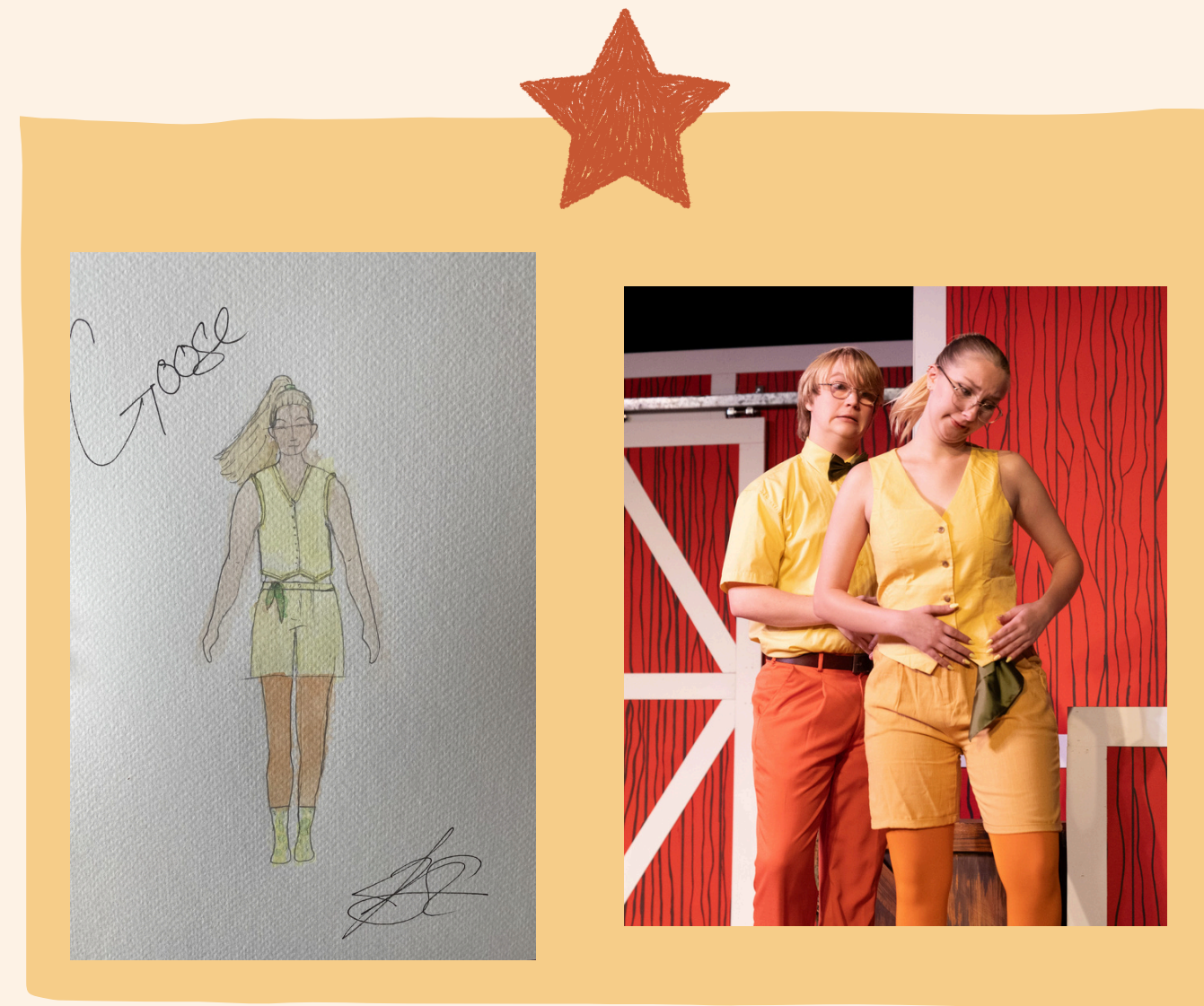


My Role

Costume Designer

This was my first opportunity to lead out as the Costume Designer. In this work with Oklahoma Children's Theatre, a small professional company, I participated in design and production meetings, gathered photo inspiration, rendered all costumes, and built/bought/altered all the pieces. Due to the size of the company, I did not have shop support. I was assisted by a few friends in the late stage of the show before tech week, but otherwise, the show's build was fully completed by me.

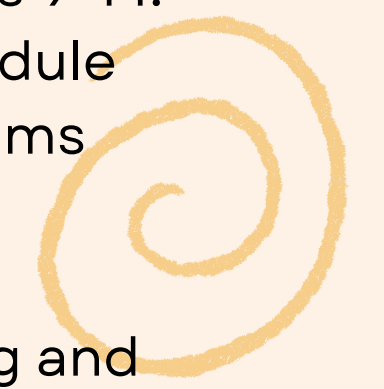
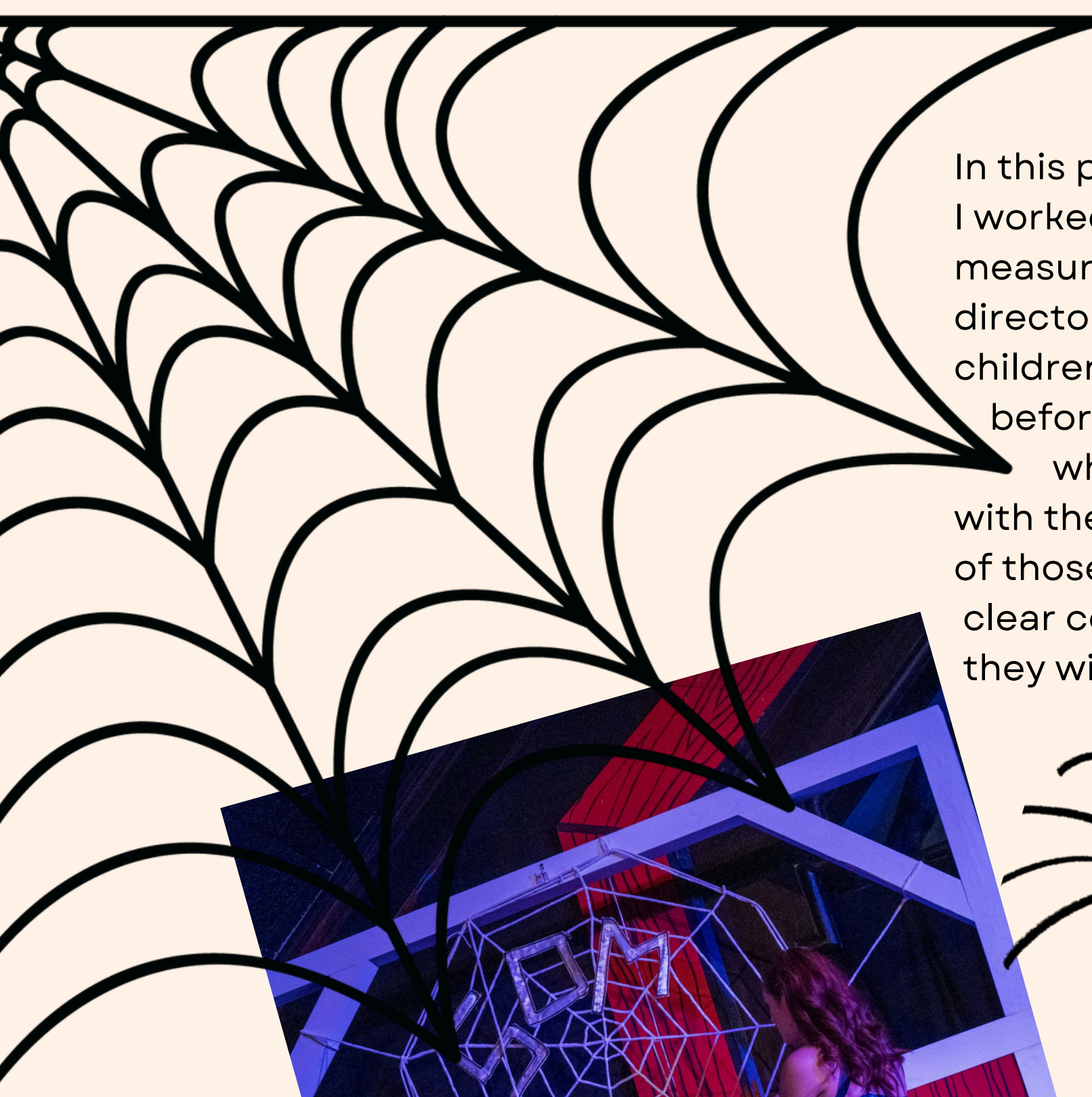
We had decided early on that we did not need or want animal costumes. We could present these characters as animals through suggestion and storytelling. This required some energy differentiating the animals from humans, since we were staying away from pig ears and duck beaks. I decided on grouping the families and rendering their pieces similarly.



Sustainable Practices on the Farm

The chorus would be in all denim with some denim patches to show they exist as human narrators. Fern's family would have country work clothes and the closer they were to the animals the more patchwork, details, and care went into their pieces. I wanted to convey an idea of sustainability from Fern's aunt and uncle, as they were the reason Wilbur got to live. Their place in the story centered on their care for life and nature. I worked to integrate sustainable clothing practices, like altering and patching clothes for their pieces to encourage this idea in a subtle way. I had a ton of fun working on Fern's costume. I like to imagine in our story her aunt made her pants for her, but when I was making them, it was some of the most specific work I did on the show. The placement of patches, buttons, paintings were all done with care, and I think it showed in the final product.



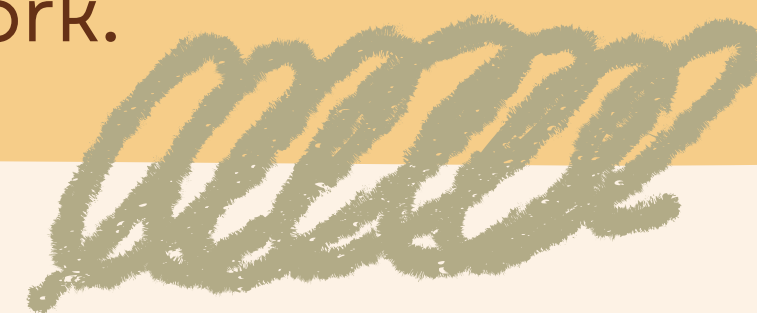


In this process, I also had the experience of costuming children ages 9-14. I worked with the theatre's performance programs director to schedule measurements and fittings with stage management and the programs director there. I integrated some best practices for working with children by communicating specifically what we would be doing before we started and continuing to specify what I would be doing and why to each minor to ensure they felt safe. This felt particularly important with these students as this cast ranged in age from 9-74. I have found that some of those practices have become habits elsewhere, as everyone can benefit from clear communication when it comes to the way we work with the pieces they will wear!

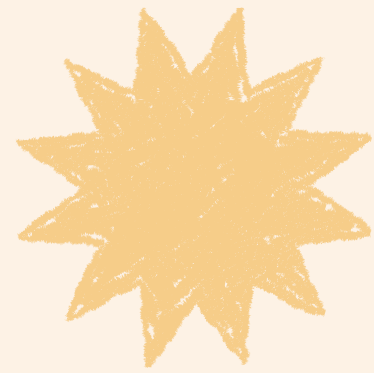


Fern

Overall, I think this experience made me a better designer, but also a better technician. With a cast of 21 actors and no shop support, there was a lot of time poured into this show, and I am very proud of the work.



the Team...



Goofy Goober



Brigitte Goulart:
Co-Director



Madison Carey:
Co-Director

Girly Cat

Chill



Jason Forman:
Scenic Designer



Joy Stachmus:
Costume Designer

Love Aborn & All Else



Fabulous



Beth Westfall:
Stage Manager



AB Wildes:
Lighting Designer

Yippee!

